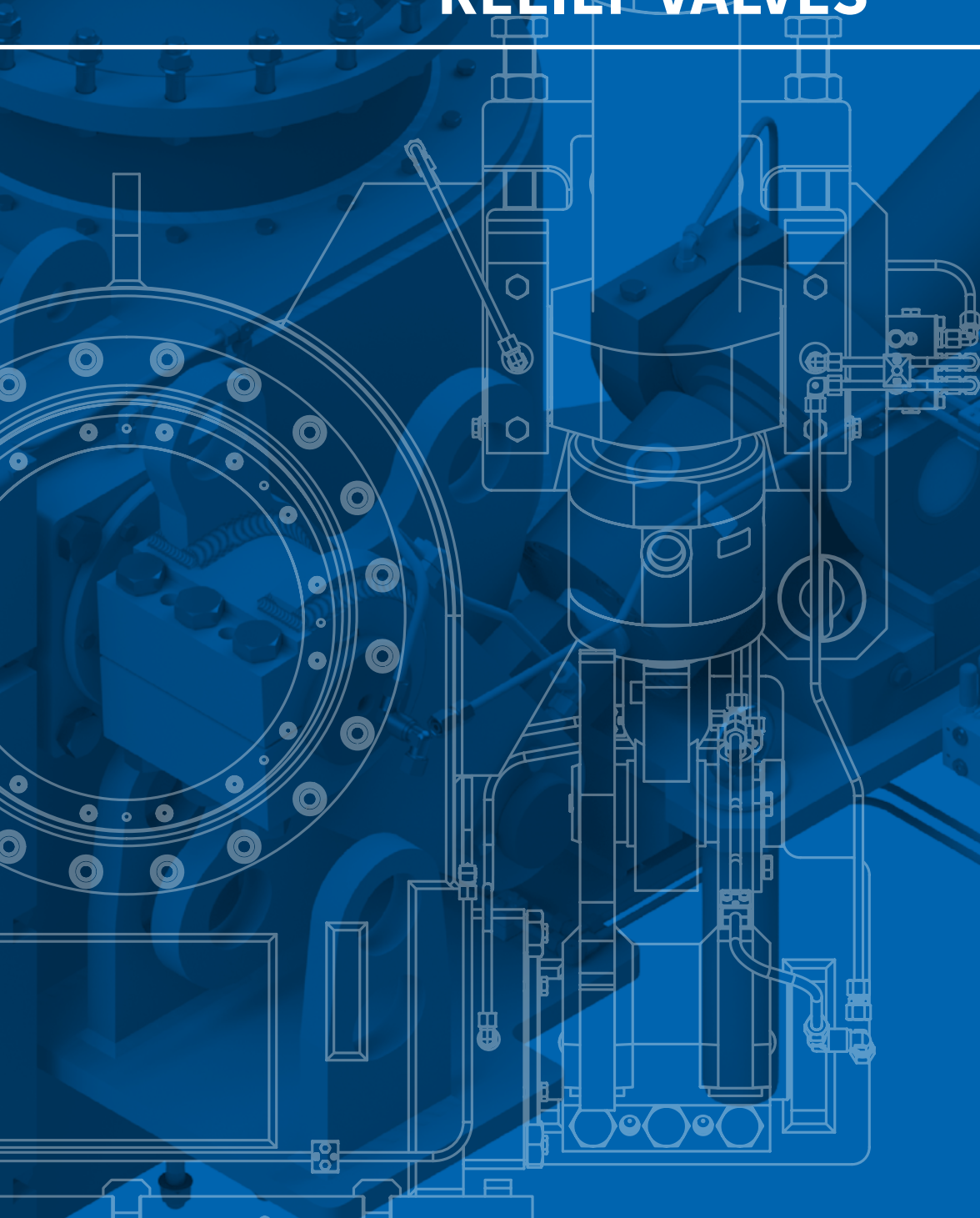


# IRON & STEEL

## EQUALIZING & RELIEF VALVES



**WCL**

Valve  
Competence  
Luxembourg

A COMPANY OF [www.sab.lu](http://www.sab.lu)

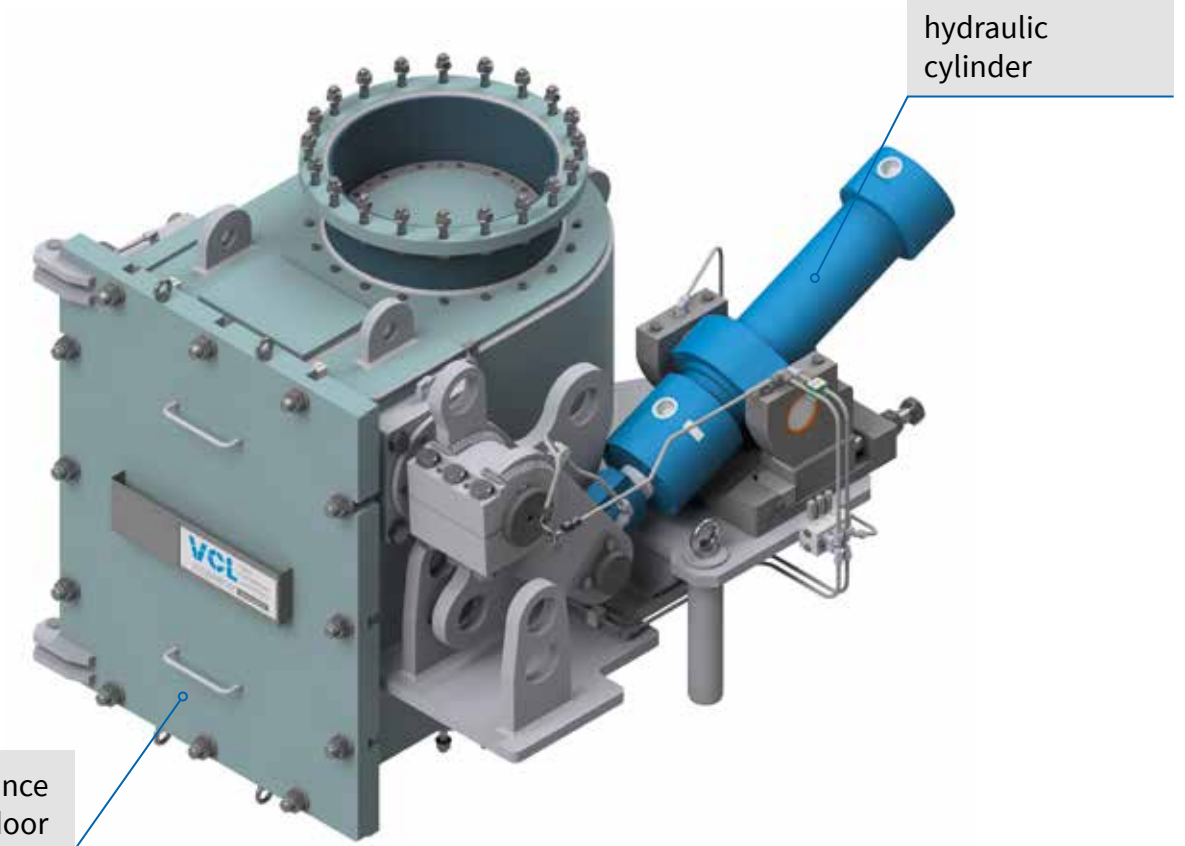
## DESIGN FEATURES OF EQUALIZING VALVES

- Fabricated construction
- Adjustable valve actuation with hydraulic cylinder (Standard)
- Pressure rating up to 3.0 bar
- Service temperatures up to 300 °C
- Nominal sizes DN 300 - DN 600
- Other sizes or operating conditions on request

## DESIGN ADVANTAGES

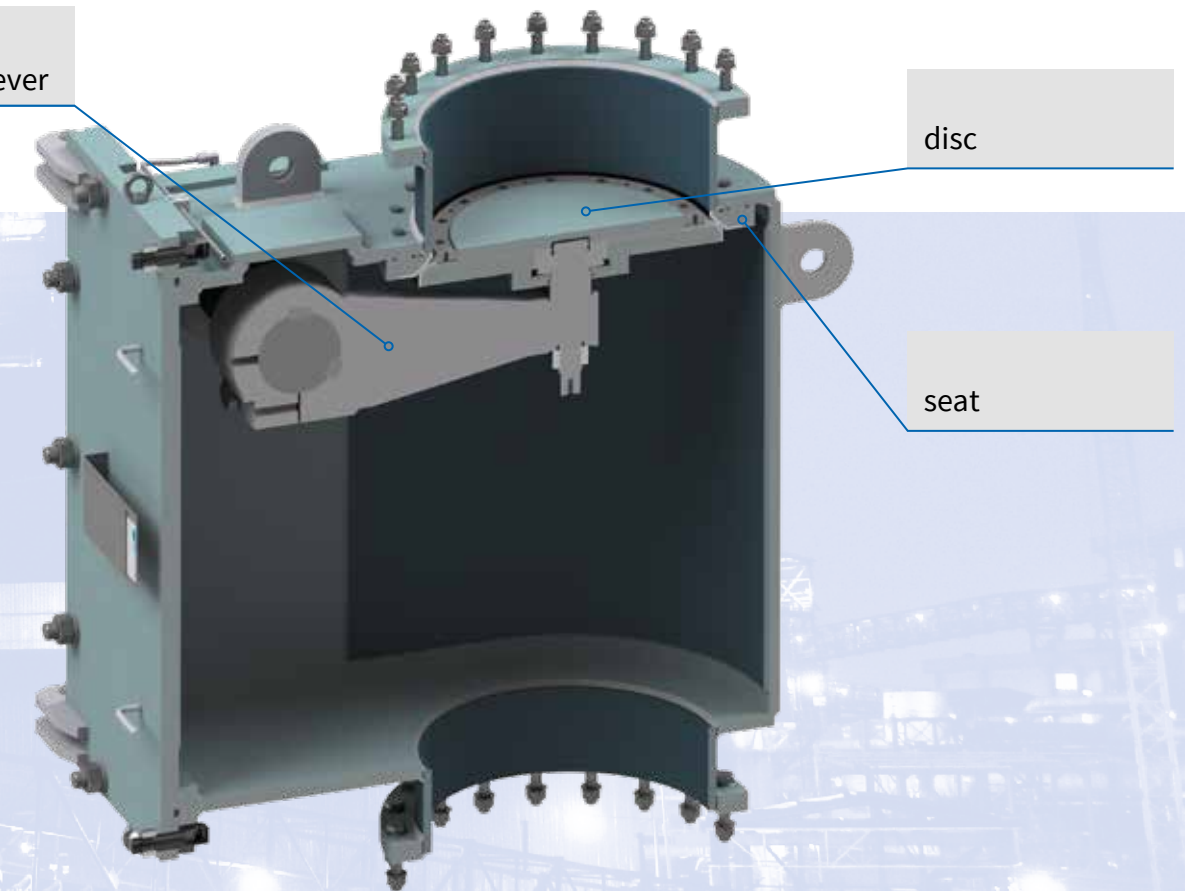
- Dismantling of internals (seat / lever-flap-unit) can pass through the large maintenance door
- Reduced maintenance and improved accessibility of equipment components
- Higher reliability & availability thanks to continuously improved design and customer feedback over several years

FULL OPENING DIAMETER [MM]	300-600
OPENING TIME [S]	3
CLOSING TIME [S]	3
MAX FURNACE TOP PRESSURE [BAR]	3
HYDRAULIC PRESSURE ON CYLINDER [BAR]	180-200



maintenance door

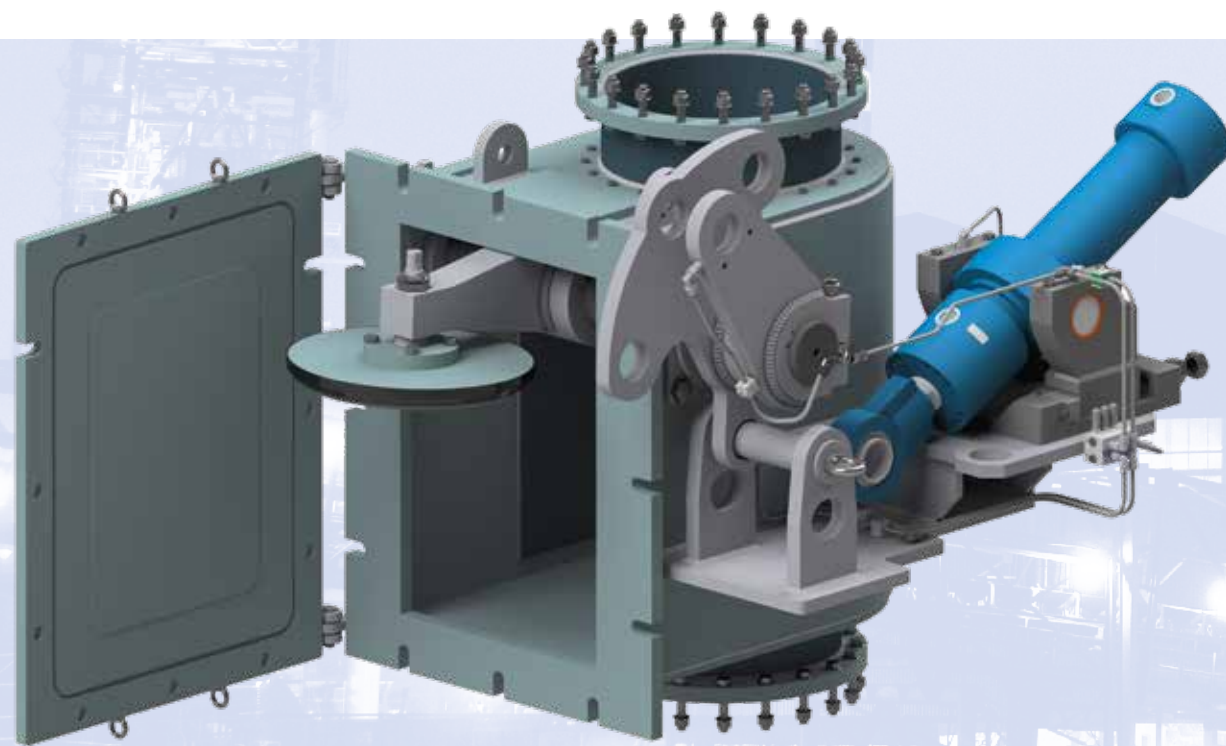
hydraulic cylinder



lever

disc

seat





# IRON & STEEL PRODUCT RANGE

**GOGGLE VALVES**



**GUIDE LEVER VALVES**



**DOUBLE ECCENTRIC VALVES**



**BLEEDER VALVES**



**DUST DISCHARGE VALVES**



**HOT BLAST VALVES  
(ENERGY SAVING)**



**TUYERE STOCKS  
(ENERGY SAVING)**



**WEDGE GATE VALVES**

## ADDITIONAL PRODUCTS

SNORT VALVES | BACK DRAFT VALVES | BUTTERFLY & LOUVER VALVES  
NON RETURN VALVES | LINE BLINDS

## ADDITIONAL SERVICES

REPAIR SERVICE | REFURBISHMENT & MODIFICATIONS,  
SPARE PARTS FOR EACH KIND AND BRAND OF VALVES



Valve  
Competence  
Luxembourg

A COMPANY OF [www.sab.lu](http://www.sab.lu)

Zone Industrielle „Am Potaschberg“  
19, op der Ahlkërrech  
L-6776 Grevenmacher  
T +352 27 68 54 - 0 | [info@vcl.lu](mailto:info@vcl.lu)  
[www.vcl.lu](http://www.vcl.lu)