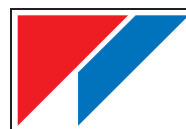
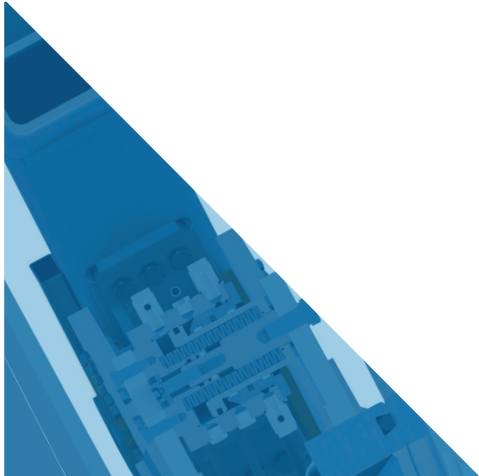


# GOGGLE VALVES

„MAN SAFE“ ISOLATION VALVES



**VCL** Valve  
Competence  
Luxembourg

JV of Paul Wurth &  [www.sab.lu](http://www.sab.lu)

## DESIGN FEATURES OF GOGGLE VALVES

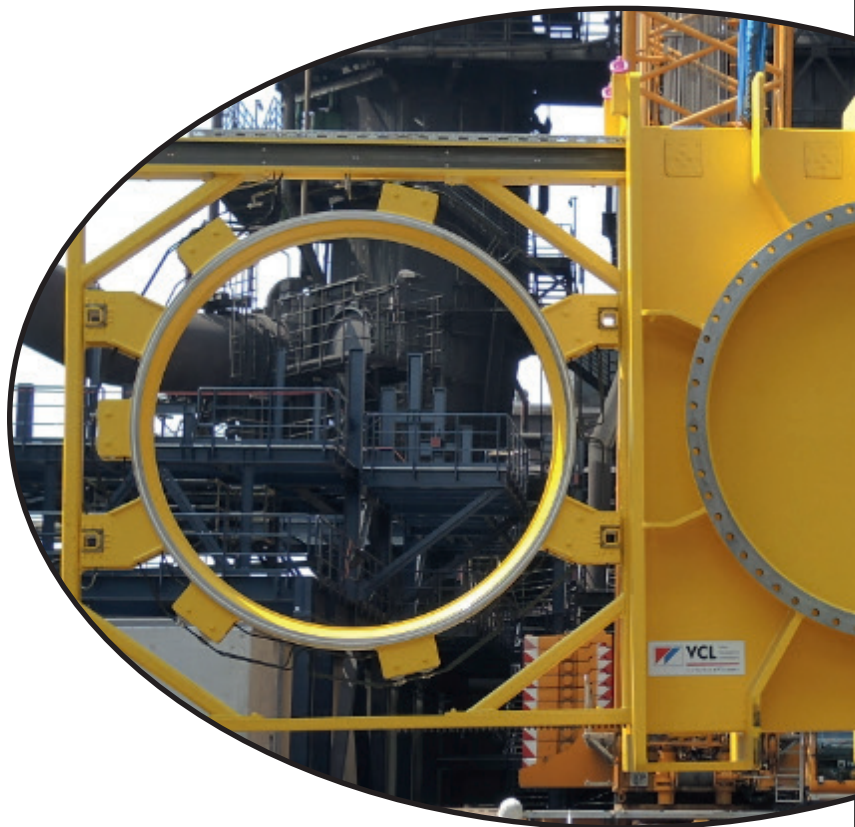
---

- Fabricated construction
- Valve actuation in accordance to customer's requirements (man. / electr. / hydr. / pneum.)
- Execution with mechanical lifting devices available
- Pressure rating up to 6 bar
- Service temperatures up to 350 °C
- Nominal sizes up to DN 5.000
- Other sizes or operating conditions on request

## THIS DESIGN GUARANTEES

---

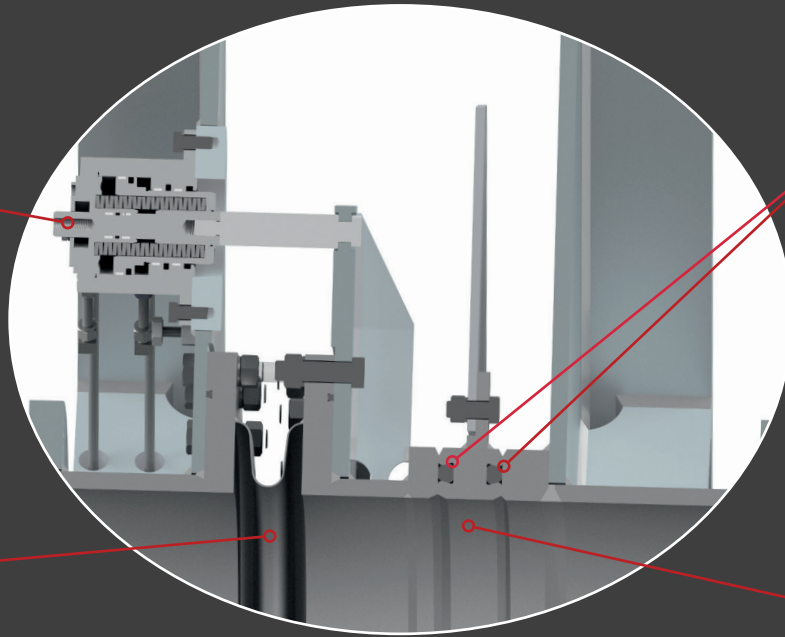
- Absolutely tight, so called "Man safe" isolation device, although used for dangerous and toxic gaseous media (even with high dust content).
- Even in the event of a leakage the gas can either escape to the atmosphere (open design) or is collected in the hoods of the enclosure and can be safely extracted into safe area (enclosed design).
- After traversing, the valve plate is clamped between the body sealing surfaces and is sealed by elastic seals inserted into grooves on the sealing faces of goggle and blind.
- In the event of power loss, the valve keeps tight, as the required sealing force is created by the spring-loaded clamping devices



# TYPE I

Clamping/unclamping cylinder with integrated spring pack

Expansion joint



Seals

Goggle & blind

## FEATURES

- Clamping/unclamping cylinders are accessible/changeable from the outside during operation.
- One single, firmly piped hydraulic system for goggle & blind.
- Hydraulics are not exposed to full thermal load.
- The expansion joint can be accessed/exchanged in dismantled condition.
- Goggle & blind are centred by a driver mechanism.

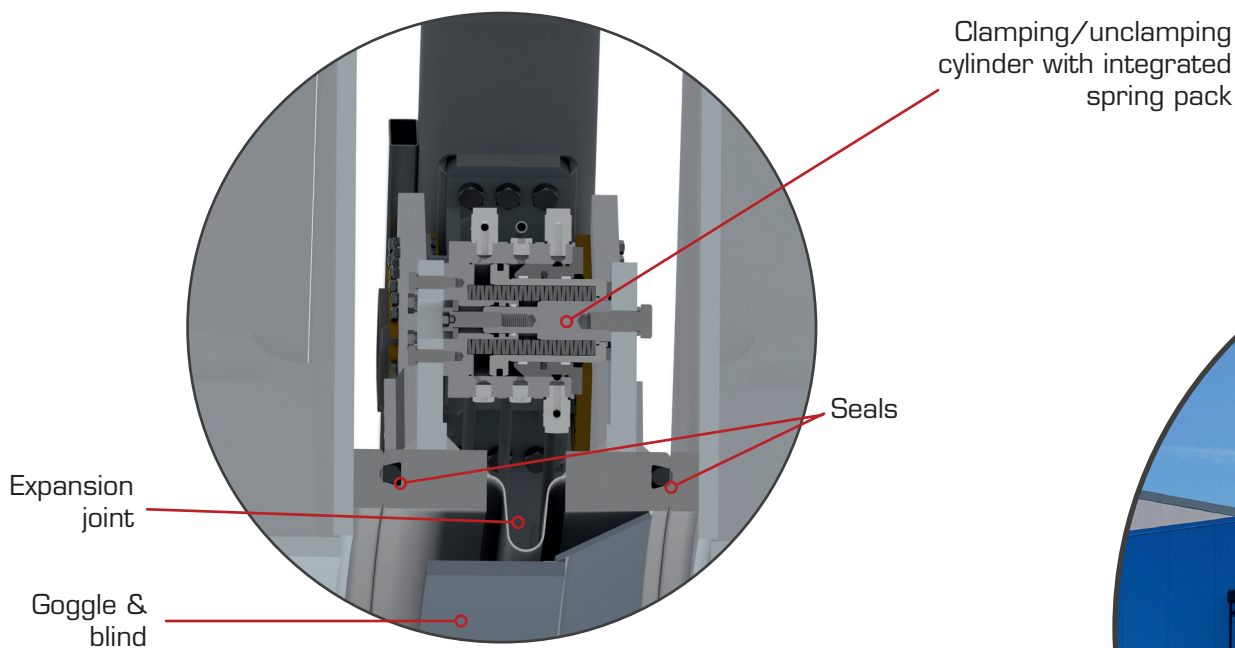




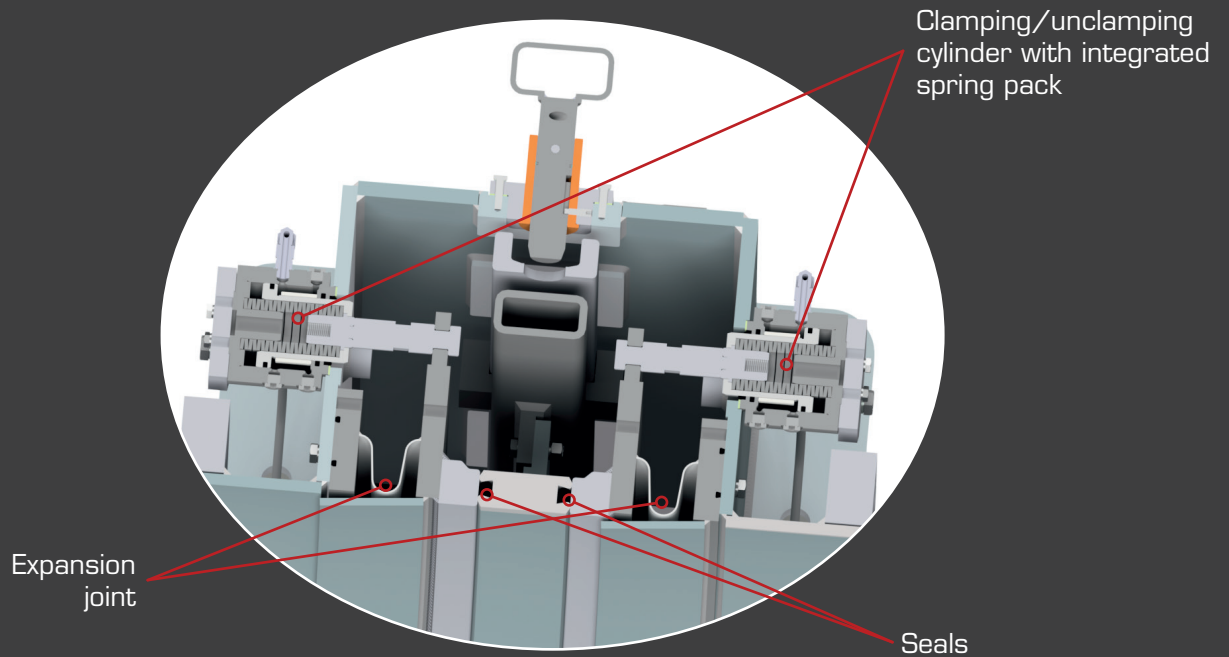
# TYPE II

## FEATURES

- Clamping/unclamping cylinders are accessible/changeable from the outside in the unclamped section during operation (on open type goggle valves only).
- The expansion joints are accessible/changeable in the unclamped section during operation.
- Goggle & blind are centrically fixed (no complex driving mechanism required).
- independant oil supply for goggle & blind plate (double quantity of cylinders!)
- enviromental conditions



# TYPE III



## FEATURES

- Clamping/unclamping cylinders are accessible/changeable from the outside during operation.
- One single, firmly piped hydraulic system for goggle & blind.
- Hydraulics are not exposed to full thermal load.
- Goggle & blind are centrally fixed by means of two expansion joints
- Two (2) expansion joints are required.
- The expansion joints can only be accessed/exchanged in dismantled condition.

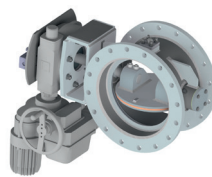
## VCL PRODUCT RANGE



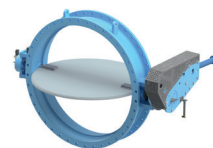
Goggle Valves



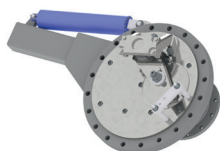
Lever Valves



Double Eccentric  
Valves



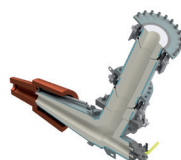
Butterfly and  
Louver Valves



Dust Outlet  
Valves



Hot Blast  
Valves  
(Energy saving)



Tuyere Stocks  
(Energy saving)



Wedge Gate  
Valves

## ADDITIONAL PRODUCTS

Push Lever Valves, Short Valves, Bleeder Valves, Equalizing & Relief Valves,  
Back Draft Valves, Non Return Valves, Line Blinds

## ADDITIONAL SERVICES

Repair Service, Refurbishment and Modifications,  
Spare parts for each kind and brand of Valves



**VCL** Valve  
Competence  
Luxembourg

JV of Paul Wurth &  [www.sab.lu](http://www.sab.lu)

19, Op der Ahlkérrech  
L-6776 Grevenmacher  
Tel.: +352 276854-0  
Fax: +352 276854-99  
E-mail: [info@vcl.lu](mailto:info@vcl.lu)  
Web: [www.vcl.lu](http://www.vcl.lu)