

LEVER VALVES

IMPROVED DESIGN



VCL Valve
Competence
Luxembourg

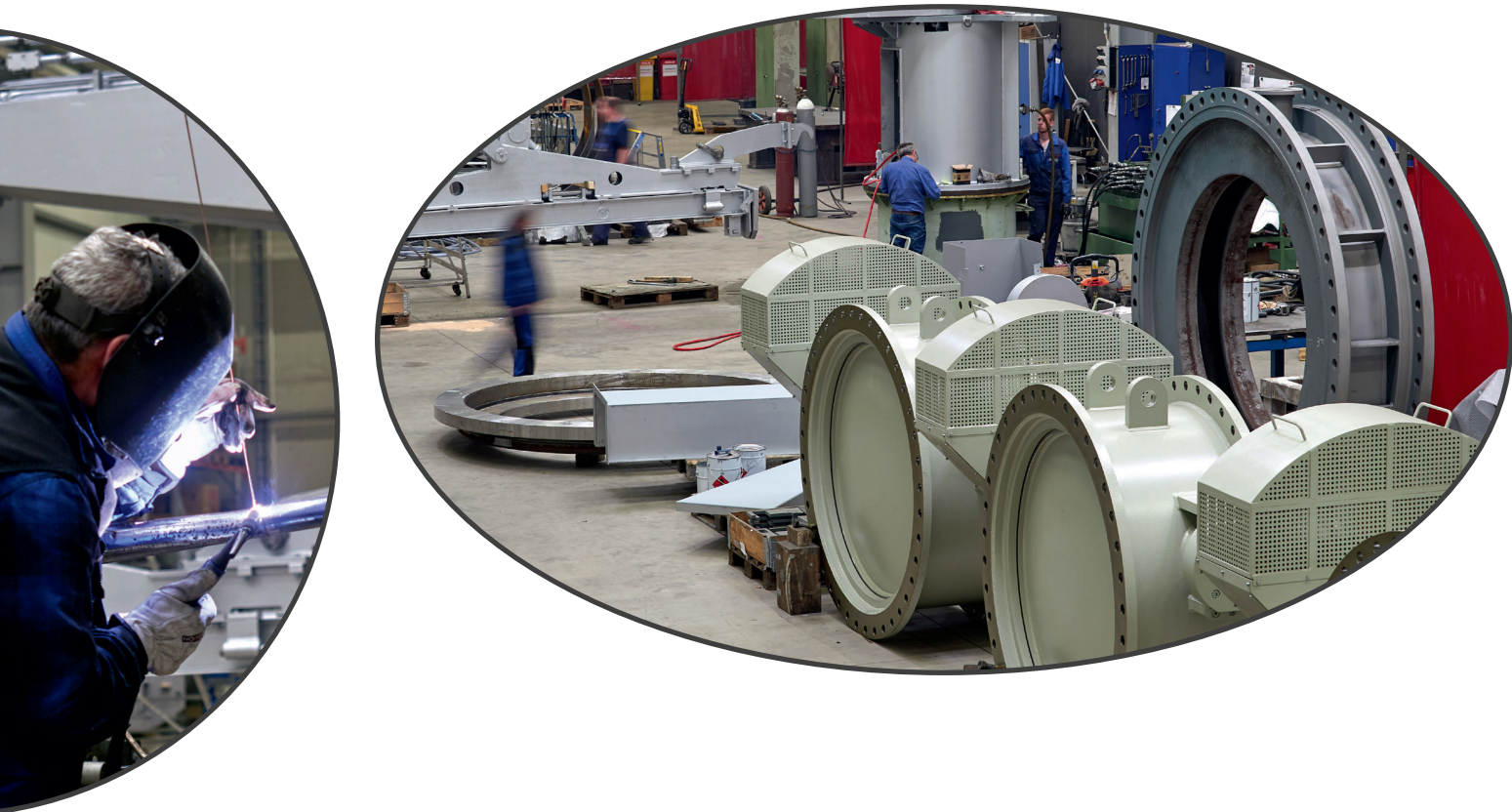
JV of Paul Wurth &  www.sab.lu

DESIGN FEATURES OF LEVER VALVES

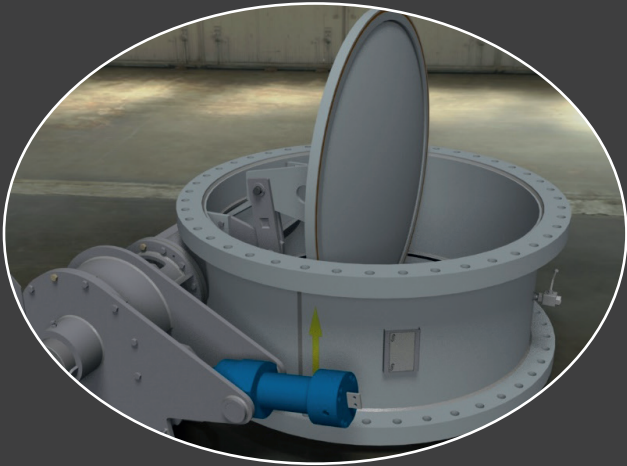
- Fabricated Construction
- Valve actuation in accordance to customers' requirements (man. / electr. / hydr. / pneum.)
- Valves available as Two-, Three- and Push-Lever Valves, with internal or external shaft
- Valves available with outside installed (High Temperature Application) and inside installed (Low Temperature Application) shaft bearings
- Pressure rating up to 6 bar
- Service temperatures up to 500°C
- Nominal sizes up to 5.000 mm
- Other sizes or operating conditions on request

THIS DESIGN GUARANTEES

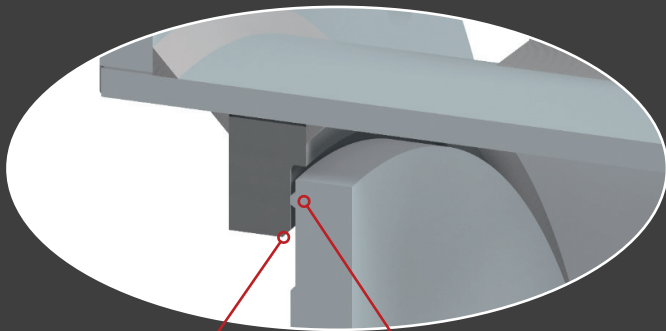
- Nearly no wear at the seats due to parallel and friction free opening and closing of the valve disc for each type of valve
- No jamming of lever systems, not even at higher temperatures
- Valves can be used in clean and dust loaded gas atmosphere
- According site conditions, a Two-Lever or Three-Lever Valve would be chosen, with internal or external shaft, with internal or external shaft bearings, soft or metal to metal seated



external shaft version



internal shaft version



hard-facing

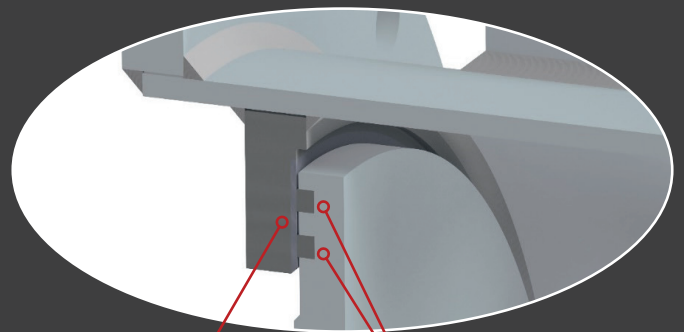
morton edge

metal-to-metal

up to 500°C

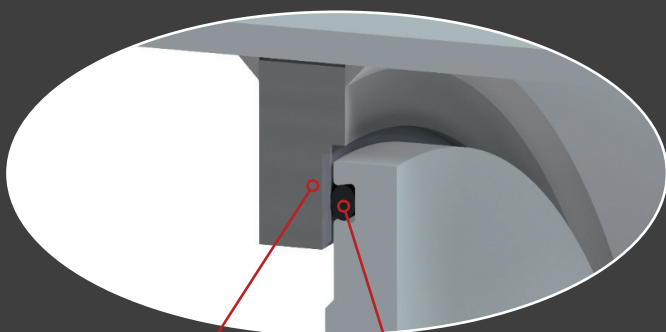
graphite seal

up to 300°C



stainless steel

graphite seal



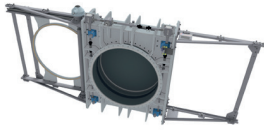
stainless steel

O-ring

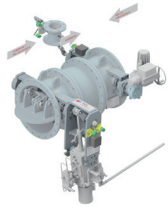
O-ring (silicone, viton etc.)

up to 200°C

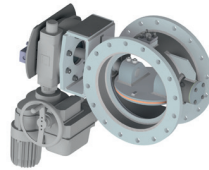
VCL PRODUCT RANGE



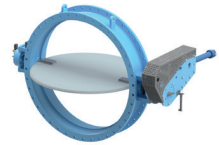
Goggle Valves



Lever Valves



Double Eccentric
Valves



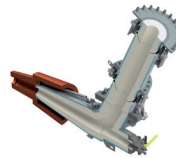
Butterfly and
Louver Valves



Dust Outlet
Valves



Hot Blast
Valves
(Energy saving)



Tuyere Stocks
(Energy saving)



Wedge Gate
Valves

ADDITIONAL PRODUCTS

Push Lever Valves, Short Valves, Bleeder Valves, Equalizing & Relief Valves,
Back Draft Valves, Non Return Valves, Line Blinds

ADDITIONAL SERVICES

Repair Service, Refurbishment and Modifications,
Spare parts for each kind and brand of Valves



VCL Valve
Competence
Luxembourg

JV of Paul Wurth &  www.sab.lu

19, Op der Ahlkërrech
L-6776 Grevenmacher
Tel.: +352 276854-0
Fax: +352 276854-99
E-mail: info@vcl.lu
Web: www.vcl.lu